



**2026 UEC MTB EUROPEAN
CHAMPIONSHIPS
MONTECENERI**



RESERVATION REQUEST FORM SPACE TEAM

From 27 July to 3 August 2026

Entry to the paddock from July 27th at 10:00 a.m., prior accreditation at the Race Office (accreditation center).

☐ **TEAM AREA:** Teams and Companies providing technical support to competitors.

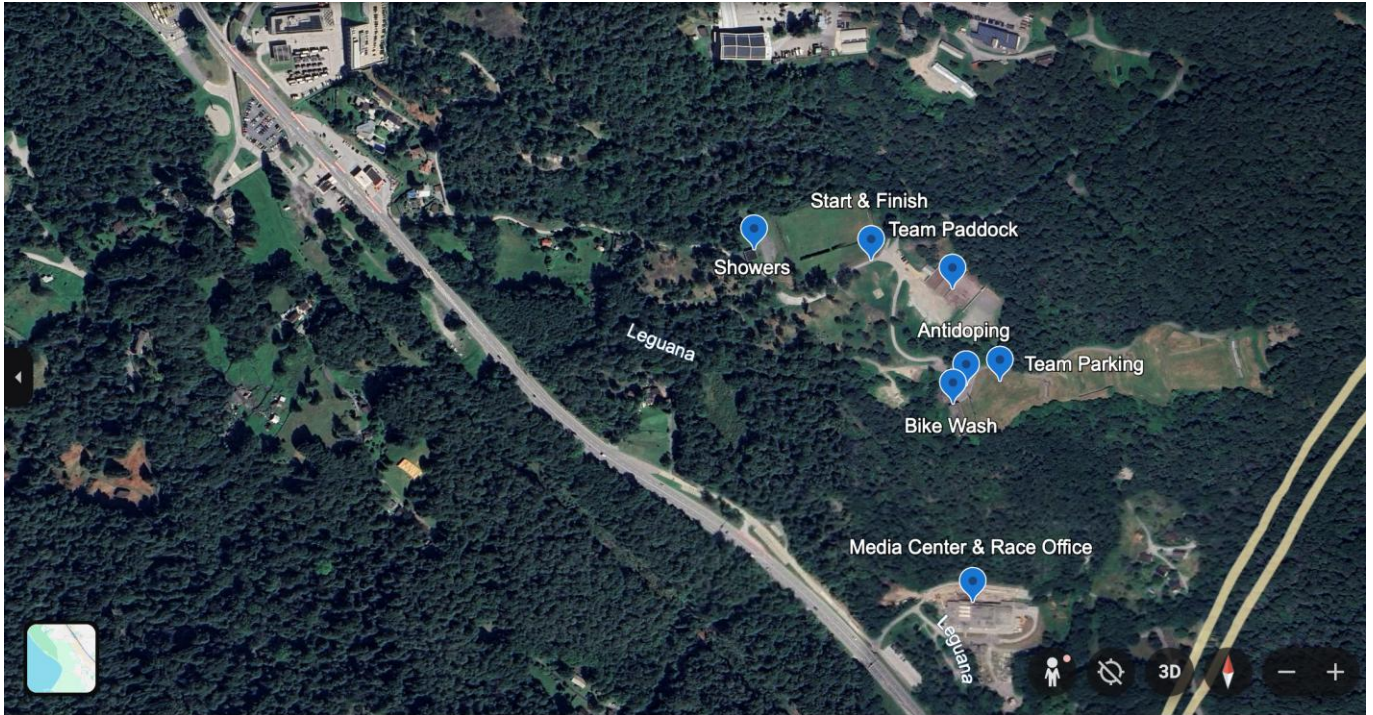
Team or Company details:

Company name (for billing):	Email:
Name of the federation:	Address:
VAT Number:	City:
Contact person (for assembly):	Country and postal code:
Mobile phone:	Arrival: Between July 27th and 28th
Type of team (XC, DH, XC elite, DH elite, dual, etc.):	Departure: Maximum on August 3th at 10 a.m.

Venues details:

To facilitate access to the paddock and maximize security, team vehicles cannot be parked in the paddock area, they must be parked in the parking area indicated. Teams may only have one fixed vehicle and one mobile vehicle authorized in their reserved paddock space. The rest of the vehicles will not be able to access the paddock areas and will have to be parked in the team areas.

2026 UEC Mountain Bike European Championship Venue:



Paddock Rules:

Team vehicles cannot be included in the paddock area, this can only include a fixed structure and a single vehicle that can be moved within the stipulated time frame, the rest of the team vehicles must be parked in the indicated area.

It is absolutely forbidden to clean the bikes, empty the contents of the wheels or dump any substance inside the paddock; teams must clean them and empty their waste in authorized spaces.

The race organization recommends that all persons traveling on public roads by bicycle comply with the following safety guidelines:

- Wearing reflective clothing or accessories is strongly recommended, especially on interurban roads and in conditions of reduced visibility or poor lighting.
- Wearing an approved and properly fastened protective helmet is recommended, particularly during long-distance rides.
- All persons are advised not to carry passengers, except where permitted and with bicycles specifically designed for that purpose.
- All persons are advised not to use headphones or other audio devices that could reduce awareness of traffic sounds.
- All persons are advised not to tow loads that could compromise the stability and safety of the bicycle.
- All persons are advised not to be towed by any other vehicle.



2026 UEC MTB EUROPEAN CHAMPIONSHIPS MONTECENERI



Space rental rates:

	From 3 to 10 competitors	From 11 to 20 competitors	21 or more competitors
Vehicle accreditation	1 fixed vehicle/module 1 vehicle with access to the paddock	1 fixed vehicle/module 1 vehicle with access to the paddock	1 fixed vehicle/module 1 vehicle with access to the paddock
m2 free of charge	20 m2 free of charge	40 m2 free of charge	60 m2 free of charge
m2 additional	15 CHF / m2	15 CHF / m2	15 CHF / m2
Electricity (220V)*	100 CHF	100 CHF	100 CHF

* Please bring your own cables to connect to the power grid.

All rates shown are exclusive of VAT. Swiss VAT at 8.1% will be added to all amounts.

<input type="checkbox"/>	I agree not to do any commercial activation during the 2026 UEC MTB European Championships
--------------------------	--

Water	There will be a special area for cleaning bicycles. It is also prohibited to clean bicycles in the paddock area and exhibition area.
Security	Night security from July 26th to August 3th

Stand size

The allocated space will be rectangular or square. Only one vehicle per team has the right to access the paddock/s, the rest of the team vehicles must be parked in authorized areas.		
Please provide us with a basic plan of the stand including the fixed module and the tents.		
Length in m =	Width in m =	Total area in m ² =



2026 UEC MTB EUROPEAN CHAMPIONSHIPS MONTECENERI



Stand rate

Total area in m ² free of charge		
Total m ² rated (x CHF/m ²)		= Price in CHF
+ electricity (220V) = 100 CHF		+ Price in CHF
Forms received after July 21th incur a surcharge of 250 CHF		+ Price in CHF
TOTAL (All invoices will be issued in CHF)		= Price in CHF

All rates shown are exclusive of VAT. Swiss VAT at 8.1% will be added to all amounts.

PAYMENT DATA		CANCELLATION FEES	
		% Non refundable	
100 %	When booking	50%	Before July 21th
		100%	After July 21th
A supplement of CHF 250 will be applied (UCI ELITE equipment included) to any form received after July 21, as well as in the event of non-use of the entire reserved space or departure before the fixed day and time.			
No reservations will be accepted after July 24th, 2026.			

Payment

Once we receive your request, we will process it internally and you will receive a confirmation email with a payment link to complete it.

Invoices will be issued fortnightly and emailed to you by our accounting team.

☐ I have read and accept the general conditions

Signature and seal:

Date:



**2026 UEC MTB EUROPEAN
CHAMPIONSHIPS
MONTECENERI**



Assembly days and payment rules

Assembly days	From July 27th to 28th, 2026
Dismantling days	From Sunday August 2th at 7 p.m. All teams must have vacated their space no later than August 3th at 3 p.m.
A supplement of 250 CHF will be applied in each of these cases:	<ul style="list-style-type: none">• Registration from July 21, 2026• Partial use or non-use of the reserved space No reservations will be accepted after July 24th, 2026

Please send the completed form to: teamarea@euromtb2026.ch

If in doubt, please contact Elia Ombelli: teamarea@euromtb2026.ch

Confirmation from the organizer:

Signature:

Date:

☐ Payment received